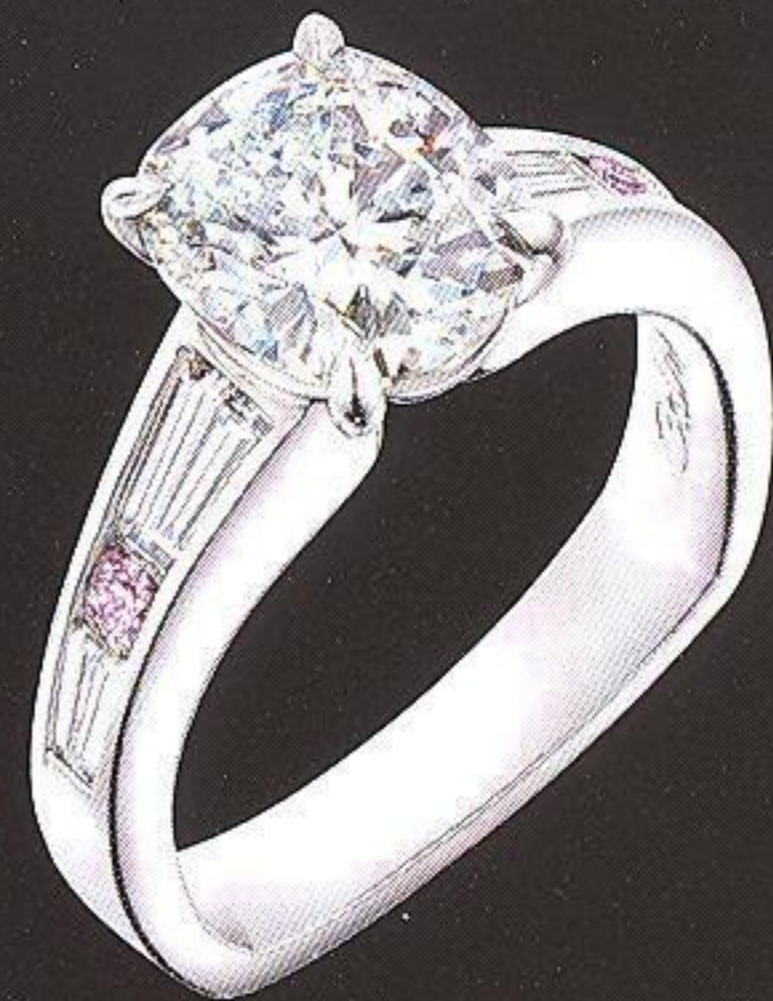


◀ **MAYBELL BY SHAUN LEANE**

Crafted in 18ct white gold, the large Maybell earrings sparkle with 2.65cts of white diamonds. Inspired by the curved shape of bell flowers, the diamond-set flowers are attached in way that affords them a gentle, trembling movement, catching the light and producing even more sparkle.

RRP: from £2,550

Contact: **Shaun Leane, 0207 405 4773, shaunleane.com**



▲ **GLACIER BY CALLEIJA**

Calleija's Glacier ring features a central Glacier-cut diamond, the Australian brand's own sparkling pillow-shaped cut with 58 facets. This platinum engagement ring is set with a 2.45ct diamond in a four-claw setting, flanked by channel set baguette diamonds and naturally pink round brilliant-cut diamonds.

RRP: from £5,000

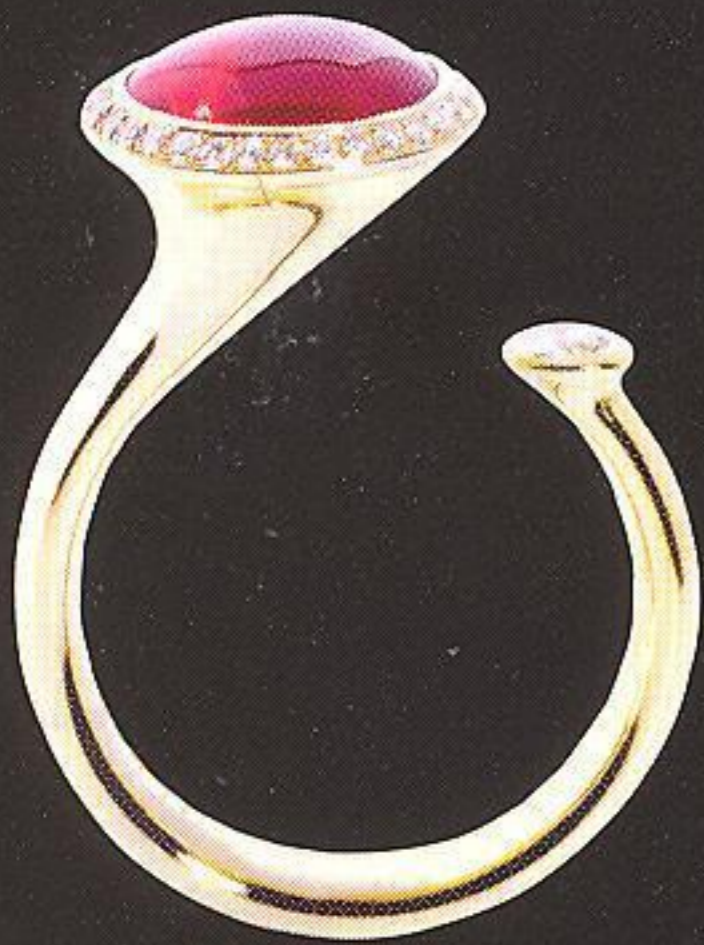
Contact: **Calleija, 0207 499 8490, calleija.com**

**NEW PRODUCTS**  
• FINE •  
**JEWELS**

▼ **SATELLITE BY ANDREW GEOGHEGAN**

This new design features a cabochon Mexican fire opal and brilliant-cut diamonds set in 18ct yellow gold. The ring is inspired by all things galactic, with a single diamond set as though it's orbiting the opal. It can be made with different coloured gemstones, in yellow, rose or white gold.

Contact: **Andrew Geoghegan, 0113 3070 100, andrewgeoghegan.com**



▶▶ **CELLINI BY PONTE VECCHIO GIOIELLI**

This curvaceous, diamond-set 18ct white gold pendant has been made by Italian jewellery brand Ponte Vecchio Gioielli. It shows off detailed stone setting, with almost 1.5ct of G colour, VS clarity diamonds set into the pendant, offering feminine luxury.

RRP: £4,650

Contact: **Saunders Shepherd & Co, 0121 236 1729, pontevecchiogioielli.it**



▲ **ENTWINE BY LINKS OF LONDON**

Taking inspiration from the Olympic ribbons on which medals are awarded, Links of London's 18ct gold Entwine collection features curled, ribbon-like details and faceted citrine gemstones. The Entwine earrings have a timeless style while celebrating the brand's sponsorship of the 2012 Olympic Games.

RRP: £995

Contact: **Links of London, 0845 120 2922, linksoflondon.com**